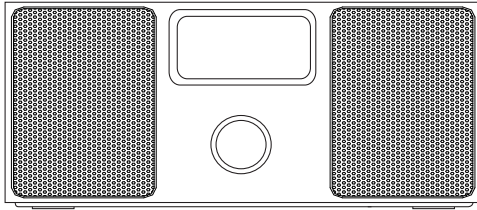


TEAC



SERVICE MANUAL

SR-LXi/LDS-Ri700

AM/FM Stereo Receiver



NOTES

- PC board shown are viewed from parts side.
- The parts with no reference number or no parts number in the exploded views are not supplied.
- As regards the resistors and capacitors, refer to the circuit diagrams contained in this manual.
- ⚠ Parts marked with this sign are safety critical components. they must be replaced with identical components - refer to the appropriate parts list and ensure exact replacement.
- Parts of [] mark can be used only with the version designated.
[E]: EUROPE [T/C]: USA - SR-LXi
[JIS]: JAPAN - LDS-Ri700

CONTENTS

1 SAFETY INFORMATION	2
2 SPECIFICATIONS	3
3 ADJUSTMENT AND CHECKS	4
4 EXPLODED VIEW AND PARTS LIST	6
5 PC BOARDS AND PARTS LISTS	9
6 WIRING DIAGRAM	13
7 INCLUDED ACCESSORIES	14

SR-LXi/LDS-Di700

1 SAFETY INFORMATION

SAFETY INFORMATION

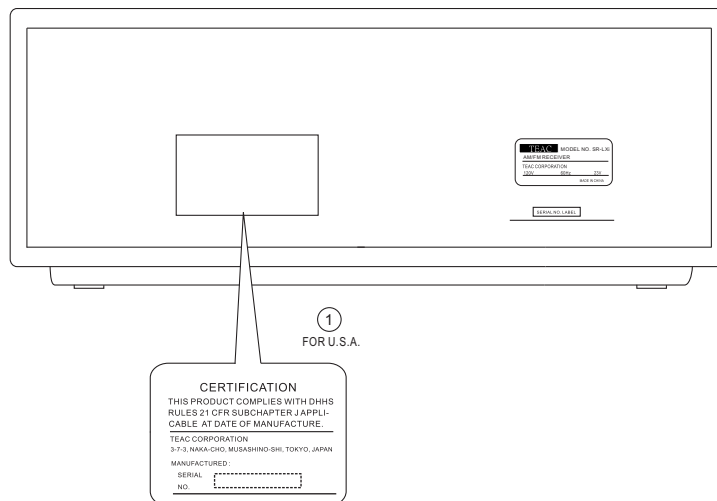
This product has been designed and manufactured according to FDA regulations "title 21, CFR, chapter 1, subchapter J, based on The Radiation Control for Health and Safety Act of 1968" and is classified as class 1 laser product. There is not hazardous invisible laser radiation during operation because invisible laser radiation emitted inside of this product is completely confined in the protective housings. The label required in this regulation is shown ①.

• **CAUTION**

USE OF CONTROLS OR ADJUSTMENT OR PERFORMANCE OF PROCEDURES OTHER THAN THOSE SPECIFIED HEREIN MAY RESULT IN HAZARDOUS RADIATION EXPOSURE.

DO NOT REMOVE THE PROTECTIVE HOUSING USING SCREWDRIVER.

IF THIS PRODUCT DEVELOPS TROUBLE, MAKE A CONTACT WITH OUR SERVICEMAN, AND DO NOT USE THE PRODUCT A TROUBLED STATE.



2 SPECIFICATIONS

TUNER Section

Frequency Range : FM - 87.5MHz to 108.00 MHz
AM - 520kHz to 1720 kHz (USA)
AM - 522kHz to 1620 kHz (EUR)

SPEAKER SYSTEM Section

Type : 65 mm x 2
Impedance : 4 ohms

GENERAL

Total Output Power: 4W + 4W
Power Requirements: 120V AC,60Hz (USA)
100V AC,60Hz (JIS)
230V AC,50Hz (EUR)
Power Consumption: 23 W
Dimension (W x H x D): 320 x 179 x 171 mm
Weight: (net) 1.8 kg

Standard Accessories: Remote Control Unit x 1
Battery for Remote Control Unit x 1
AM Loop Antenna x 1
Dock adaptor x 8
(adaptor "60GB(color)+Photo 40/60GB" premounted)
Cover for the Dock x 1
Stereo mini plug cable x 1
AC Adaptor x 1
Owner's Manual x 1
Warranty Card x 1

- Design and specifications are subject to change without notice.
- Illustrations may differ slightly from production models.
- Weight and dimensions are approximate.

SR-LXi/LDS-Di700

3 ADJUSTMENTS AND CHECKS

3-1 TUNER Section

- Use a screwdriver with a plastic or ceramic grip for all adjustment.

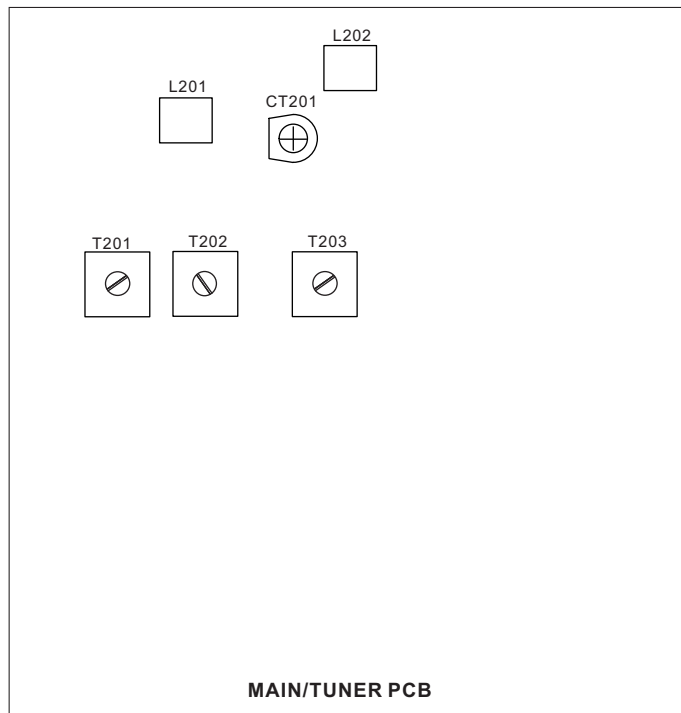
3-1-1 FM adjustment

1. Set the function switch to the FM position.
2. Connect an RF generator to the FM antenna terminal and ground.
3. Connect a SCOPE & VTVM across the speaker output.

3-1-2 AM adjustment

1. Set the function switch to the AM position.
2. Connect an RF generation to a standard radiating loop.
3. Connect a SCOPE & VTVM across the speaker output.

3-2 Adjustment and Test Points

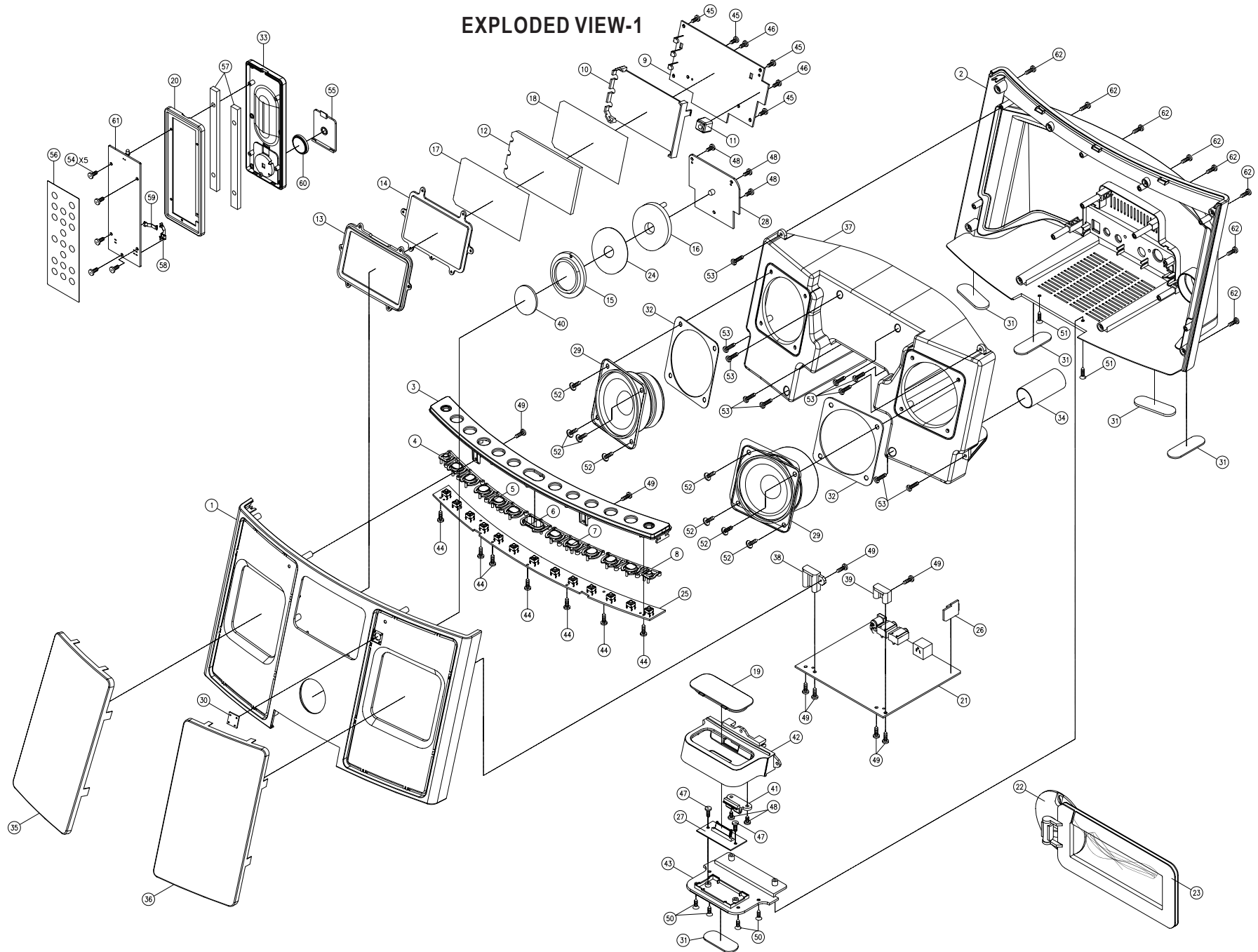


3-2-1 FM/AM alignment chart

ITEM	SG SETTING	TUNER SETTING	ADJUSTMENT POINT	ADJUSTMENT
FM				
1. FM band	87.5MHz 1kHz, +/-22.5kHz dev.	87.5MHz	L202	Adjust for max. output and best waveform.
2. Tracking	108MHz 1kHz, +/-22.5kHz dev.	108MHz		
	90MHz 1kHz, +/-22.5kHz dev.	90MHz	L201	
	106MHz 1kHz, +/-22.5kHz dev.	106MHz	CT201	
Repeat step 2 to obtain max adjust.				
AM				
1. IF adjustment	455kHz 1kHz, 30% mod	1710kHz (USA) 1620kHz (EUR)	T203	Center for max. output.
2. AM band	520kHz (USA) 522kHz (EUR) 1kHz, 30% mod	520kHz (USA) 522kHz (EUR)	T202	Adjust for max. output and best waveform.
3. Tracking	1710kHz (USA) 1620kHz (EUR) 1kHz, 30% mod	1710kHz (USA) 1620kHz (EUR)		
	600kHz (USA) 603kHz (EUR) 1kHz, 30% mod	600kHz (USA) 603kHz (EUR)	T201	
	1400kHz (USA) 1404kHz (EUR) 1kHz, 30% mod	1400kHz (USA) 1404kHz (EUR)		
Repeat step 3 to obtain best tracking.				

SR-LXi/LDS-Ri700

4 EXPLODED VIEWS AND PART EXPLODED VIEW-1



SR-LXi/LDS-Ri700

EXPLODED VIEW-1

REF. NO	PARTS NO.	DESCRIPTION	REMARKS
1-1	56-04SRLXI0B000	FRONT CABINET - BLACK	
	56-04SRLXI09010	FRONT CABINET - WHITE	
1-2	56-05SRLXI00000	REAR CABINET [E]	
	56-05SRLXI0B010	REAR CABINET - BLACK [T/C]	
	56-05SRLXI09010	REAR CABINET - WHITE [T/C]	
	56-05SRLXI02000	REAR CABINET [JIS]	
1-3	56-22SRLXI1B010	TOP COVER - BLACK	
	56-22SRLXI19010	TOP COVER - WHITE	
1-4	56-54SRLXI0B010	VOL KEY - BLACK	
	56-54SRLXI09010	VOL KEY - WHITE	
1-5	56-54SRLXI1B000	FUNCTION KEY - BLACK	
	56-54SRLXI19000	FUNCTION KEY - WHITE	
1-6	56-54SRLXI2B010	STANDBY/ON KEY - BLACK	
	56-54SRLXI29010	STANDBY/ON KEY - WHITE	
1-7	56-54SRLXI3B010	PLAY KEY - BLACK	
	56-54SRLXI39010	PLAY KEY - WHITE	
1-8	56-54SRLXI4B010	TUNING KEY - BLACK	
	56-54SRLXI49010	TUNING KEY - WHITE	
1-9	05-04SRLXI00050	LCD PCB ASSY - BLACK [E]	
	05-04SRLXI00040	LCD PCB ASSY - WHITE [E]	
	05-05SRLXI00010	LCD PCB ASSY - BLACK [T/C]	
	05-05SRLXI00000	LCD PCB ASSY - WHITE [T/C]	
	05-05SRLXI00110	LCD PCB ASSY - BLACK [JIS]	
	05-05SRLXI00100	LCD PCB ASSY - WHITE [JIS]	
1-10	56-07SRLXI39000	BACKLIGHT BRACKET	
1-11	56-07SRLXI4B000	SENSOR HOLDER - BLACK	
	56-07SRLXI49000	SENSOR HOLDER - WHITE	
1-12	56-57SRLXI10000	BACKLIGHT LENS	
1-13	56-78SRLXI1G000	DISPLAY TRIM	
1-14	56-57SRLXI00000	DISPLAY LENS	
1-15	56-22SRLXI2B000	POWER RING COVER - BLACK	
	56-22SRLXI29000	POWER RING COVER - WHITE	
1-16	56-07SRLXI09000	RING BACK LIGHT BRACKET	
1-17	56-26SRLXI00020	FILTER SHEET 112x51x0.1MM	
1-18	57-26SRLXI00120	BACKLIGHT SHEET 112x51x0.2MM	
1-19	56-22SRLXI0B000	DUSTPREVENTION COVER - BLACK	
	56-22SRLXI09000	DUSTPREVENTION COVER - WHITE	
1-20	56-43DX0150B000	REMOTE FRONT CABINET - BLACK	
	56-43DX01509000	REMOTE FRONT CABINET - WHITE	
1-21	05-01SRLXI00050	MAIN/TUNER PCB ASSY - BLACK [E]	
	05-01SRLXI00040	MAIN/TUNER PCB ASSY - WHITE [E]	
	05-01SRLXI00010	MAIN/TUNER PCB ASSY - BLACK [T/C]	
	05-01SRLXI00000	MAIN/TUNER PCB ASSY - WHITE [T/C]	
	05-01SRLXI00110	MAIN/TUNER PCB ASSY - BLACK [JIS]	
	05-01SRLXI00100	MAIN/TUNER PCB ASSY - WHITE [JIS]	
1-22	56-07X20000B000	AM ANT STAND - BLACK	
	56-07X200009000	AM ANT STAND - WHITE	
1-23	56-27X20000B000	AM ANT HOLDER - BLACK	
	56-27X200009000	AM ANT HOLDER - WHITE	
1-24	57-26SRLXI00220	RING BACKLIGHT PVC	
1-25	25-05SRLXI00000	KEY PCB ASSY	
1-26	05-08SRLXI00005	AM ANT PCB ASSY - BLACK	
	05-08SRLXI00000	AM ANT PCB ASSY - WHITE	
1-27	05-08SRLXI00010	IP PCB ASSY	
1-28	05-17SRLXI00000	LED PCB ASSY	

SR-LXi/LDS-Di700

EXPLODED VIEW-1

REF. NO	PARTS NO.	DESCRIPTION	REMARKS
1-29	190021082800020	SPEAKER 8W 2.75 INCHES	
1-30	57-08SRLXI00120	SENSOR PVC PLATE -11.8x11.8x0.3MM	
1-31	58-26SRLXI00120	FOOT PAD - BLACK	
	58-26SRLXI00020	FOOT PAD - GREY	
1-32	58-58SLD8800020	EVA (SPEAKER) - 70x70x1MM	
1-33	56-43DX0151B000	REMOTE REAR CABINET - BLACK	
	56-43DX01519000	REMOTE REAR CABINET - WHITE	
1-34	58-64SRLXI00220	PAPER TUBE D32x28x65MM - BLACK	
1-35	61-91SRLXI00120	SPEAKER GRILL (L) - BLACK	
	61-91SRLXI0A120	SPEAKER GRILL (L) - SILVER	
1-36	61-91SRLXI10120	SPEAKER GRILL (R) - BLACK	
	61-91SRLXI1A120	SPEAKER GRILL (R) - SILVER	
1-37	56-85SRLXI0B000	SPEAKER FRONT	
1-38	56-07SRLXIEB000	MAIN PCB BRACKET (L) - BLACK	
	56-07SRLXIE9000	MAIN PCB BRACKET (L) - WHITE	
1-39	56-07SRLXIFB000	MAIN PCB BRACKET (R) - BLACK	
	56-07SRLXIF9000	MAIN PCB BRACKET (R) - WHITE	
1-40	56-78SRLXI09000	POWER RING LENS	
1-41	56-07SRLXI0B000	IPOD LOCK - BLACK	
	56-07SRLXI09000	IPOD LOCK - WHITE	
1-42	56-07SRLXI2B010	IPOD HOLDER TOP - BLACK	
	56-07SRLXI29010	IPOD HOLDER TOP - WHITE	
1-43	56-07SRLXI1B000	IPOD HOLDER BOTTOM - BLACK	
	56-07SRLXI19000	IPOD HOLDER BOTTOM - WHITE	
1-44	66-140220180321	SELF-TAPPING SCREW TA/BH 2X8MM	
1-45	66-140226180321	SELF-TAPPING SCREW TA/BH 2.6X8MM	
1-46	66-140226180321	SELF-TAPPING SCREW TA/BH 2.6X8MM	
1-47	66-140326170321	SELF-TAPPING SCREW TA/PH 2.6X7MM	
1-48	66-140330180321	SELF-TAPPING SCREW TA/PH 3X8MM	
1-49	66-140330210321	SELF-TAPPING SCREW TA/PH 3X10MM	
1-50	66-140526180121	SELF-TAPPING SCREW TA/KH 2.6X8MM(BLACK)	
1-51	66-140530210121	SELF-TAPPING SCREW TA/PH 3X10MM (BLACK)	
	66-140530210321	SELF-TAPPING SCREW TA/PH 3X10MM	
1-52	66-140830212121	SELF-TAPPING SCREW TA/WH 3X12MM (BLACK)	
1-53	66-150230212121	SELF-TAPPING SCREW TB/BH 3X12MM (BLACK)	
	66-150230212321	SELF-TAPPING SCREW TB/BH 3X12MM	
1-54	66-140520170121	SELF-TAPPING SCREW TA/KH 2X7MM	
1-55	56-44DX0150B000	REMOTE BATTERY DOOR - BLACK	
	56-44DX01509000	REMOTE BATTERY DOOR - WHITE	
1-56	57-33SRLXI00120	REMOTE PLATE - BLACK	
	57-33SRLXI00020	REMOTE PLATE - WHITE	
1-57	61-11DX01500220	REMOTE AGGRAVATE FERRUM	
1-58	61-25DX01500021	BATTERY PLATE (+)	
1-59	61-25DX01500120	BATTERY PLATE (-)	
1-60	51-021301000080	LITHIUM BATTERY CR2032	
1-61	05-13SRLXI00000	REMOTE CONTROL PCB ASSY	
1-62	66-140330210121	SELF-TAPPING SCREW TA/PH 3X10MM (BLACK)	
	66-140330210321	SELF-TAPPING SCREW TA/PH 3X10MM	

SR-LXi/LDS-Di700

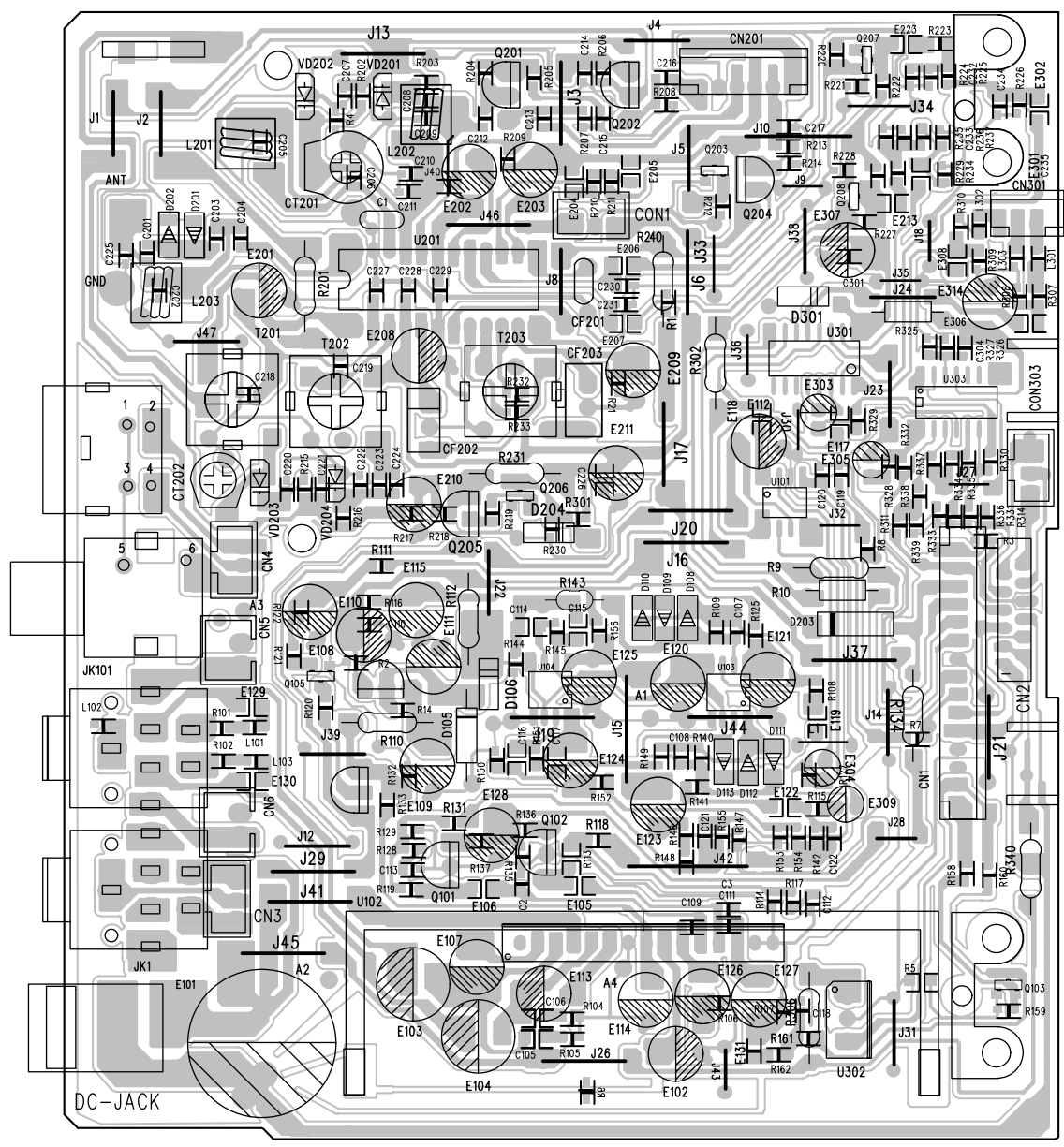
5 PC BOARDS AND PARTS LIST

MAIN/TUNER PCB ASSY

REF. NO	PARTS NO.	DESCRIPTION	REMARKS
	05-01SRLXI00050	MAIN/TUNER PCB ASSY - BLACK [E]	
	05-01SRLXI00040	MAIN/TUNER PCB ASSY - WHITE [E]	
	05-01SRLXI00010	MAIN/TUNER PCB ASSY - BLACK [T/C]	
	05-01SRLXI00000	MAIN/TUNER PCB ASSY - WHITE [T/C]	
	05-01SRLXI00110	MAIN/TUNER PCB ASSY - BLACK [JIS]	
	05-01SRLXI00100	MAIN/TUNER PCB ASSY - WHITE [JIS]	
	48-01SRLXI00121	MAIN PCB [E]	
	48-01SRLXI00120	MAIN PCB [T/C,JIS]	
CF201	31-038107020120	DISCRIMINATOR FILTER JT10.7MG46-A	
CF202	31-028107000120	CER. FILER LT10.7MA5-A	
CF203	31-026450010110	CER.FILTER SF450B	
CN1	43-012200215120	WAFER 2MM 15PIN	
CN2	43-012100212220	F.F.C WAFER 1MM 12P	
CN5,6	43-012250120120	WAFER 2.5MM 2PIN	
CN201	43-012200160120	WAFER 2MM 6PIN	
CT201	27-501802201020	TRIMMER 20PF	
CT202	27-501602101020	TRIMMER 10PF	
D105	12-012100320125	ZENER DIODE 10V 1/2W	
D106,301	12-011510320125	ZENER DIODE 5.1V 1/2W	
D108-113,201,202	12-PMLL4148L021	SMD DIODE PMLL4148L	
D203	12-1N4148000125	DIODE 1N4148	
D204	12-011470320125	ZENER DIODE 4.7V 1/2W	
DC JACK	43-531800001020	DC JACK TC-18-013-03	
E101	⚠ 26-017470850121	E.CAP - 4700UF/25V	
E103,104	⚠ 26-017100650121	E.CAP - 1000UF/10V	
JK1,101	43-431350001020	PHONE JACK D3.5MM (BLACK)	
	43-431350007020	PHONE JACK D3.5MM (WHITE)	
L101-103,301-303	39-013100060020	CHIP INDUCTOR 10UH	
L201	40-351450135020	FM COIL 4.5x3.5Tx0.8MM	
L202	40-351450125020	FM COIL 4.5x2.5Tx0.8MM	
L203	40-351500145020	FM COIL 5x4.5Tx0.8MM	
Q101,102	11-2SD1936T0125	TR - 2SD1936T	
Q106	11-8050D0000025	TR - 8050D 2W	
Q104,205	11-8550D0000025	TR - 8550D 2W	
Q201,202,204	11-9018G0000021	TR - 9018G	
Q105,203,206-208	11-MMBT39040121	SMD TR - MMBT3904	
S-VIDEO	43-462103000120	D-S TERMINAL #DS-15	
T201	40-013120000020	IFT 10MM 312A - BLACK	
T202	40-01660R002020	IFT 10MM 660R - RED	
T203	40-01A049004020	IFT 10MM A049 - YELLOW	
U101	16-PT2259000021	IC - PT2259S	
U102	16-BA5417000021	IC - BA5417	
U103,104	16-BA4558F00021	IC - BA4558F	
U201	16-LA1823000021	IC - LA1823	
U301	16-HEF4052B0021	IC - HEF4052BT	
U302	16-KA7805000121	IC - KA7805E	
U303	16-LM324D000021	IC - SM LM324D	
VIEDO	43-451100014020	RCA JACK 1P	
VD201,202	12-1SV101000021	VARICAP DIODE 1SV101	
VD203,204	12-1SV149000021	VARICAP DIODE 1SV149	

SR-LXi/LDS-Ri700

MAIN/TUNER PCB



SR-LXi/LDS-Di700

KEY PCB ASSY

REF. NO	PARTS NO.	DESCRIPTION	REMARKS
	05-05SRLXI00000	KEY PCB ASSY	
	48-05SRLXI00221	KEY PCB	
SW1-13	41-150010030020	TACT SWITCH 6x6MM 4LEGS	

LCD PCB ASSY

REF. NO	PARTS NO.	DESCRIPTION	REMARKS
	05-04SRLXI00050	LCD PCB ASSY - BLACK [E]	
	05-04SRLXI00040	LCD PCB ASSY - WHITE [E]	
	05-05SRLXI00010	LCD PCB ASSY - BLACK [T/C]	
	05-05SRLXI00000	LCD PCB ASSY - WHITE [T/C]	
	05-04SRLXI00110	LCD PCB ASSY - BLACK [JIS]	
	05-04SRLXI00100	LCD PCB ASSY - WHITE [JIS]	
	48-04SRLXI00222	DISPLAY PCB [E]	
	48-04SRLXI00221	DISPLAY PCB [T/C, JIS]	
CON2	43-022200180120	WAFER 2MM 8PIN	
CON6	43-012200130120	WAFER 2MM 3PIN	
D1,2,7,501-503	13-1N4148000125	DIODE 1N4148	
D3,6,9	12-PMLL4148L021	SMD DIODE 1N4148	
LED10-13	13-011200121020	LED 2x4MM (WHITE)	
LCD401	13-05SRLXI00020	LCD DISPLAY #KPS-M0851-TW-1	
Q4,6,7,12,501,502	11-PMBT39040021	SMD TR - PMBT3904	
Q8	11-PMBT39060021	SMD TR - PMBT3906	
RE401	17-05FM60380011	OPTIC SENSOR #FM-6038TM2-5A	
U401	16-GY4470000021	CPU - GY447	
XT1	31-017450002010	CRYSTAL 4.50MHZ	
XT2	31-015327603020	CRYSTAL 32.768KHZ	
ZD5	12-011240320125	ZENER DIODE 2.4V 1/2W	

LED PCB ASSY

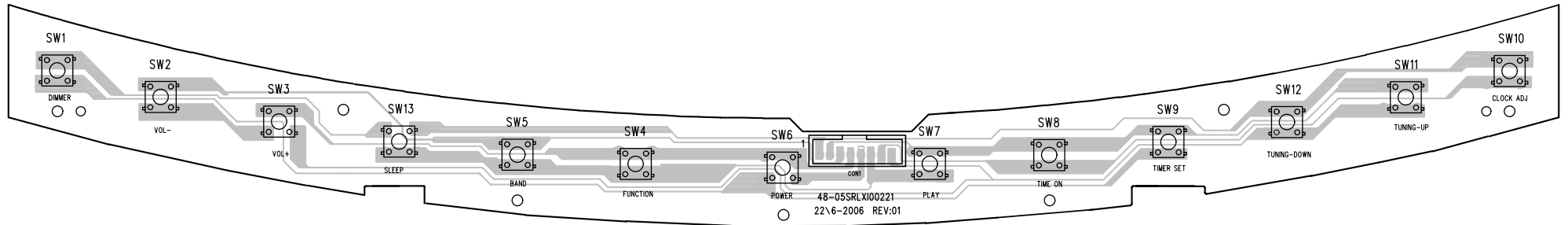
REF. NO	PARTS NO.	DESCRIPTION	REMARKS
	05-17SRLXI00000	LED PCB ASSY	
	48-17SRLXI00221	LED PCB	
LED1	13-011506022120	LED 5MM (BLUE)	
Q1	11-MMBT39040121	SMD TR - MMBT3904	
VOL1	22-810063500020	H/SEMI-FIXED 500 OHM	

AM ANT PCB ASSY

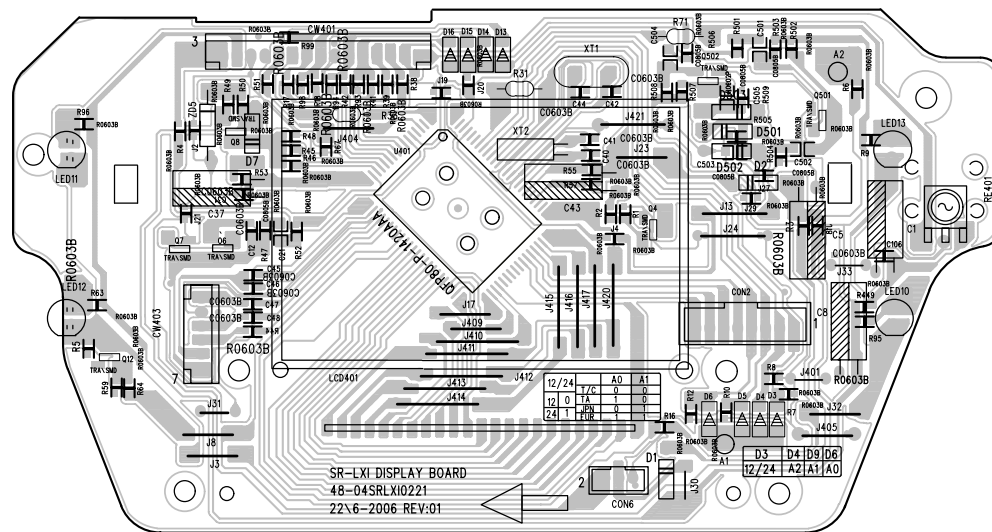
REF. NO	PARTS NO.	DESCRIPTION	REMARKS
	05-08SRLXI00005	AM ANT PCB ASSY - BLACK	
	05-08SRLXI00000	AM ANT PCB ASSY - WHITE	
	48-08SRLXI00220	AM ANT PCB	
	43-022250120221	WAFER 2.5MM 2P	

SR-LXi/LDS-Ri700

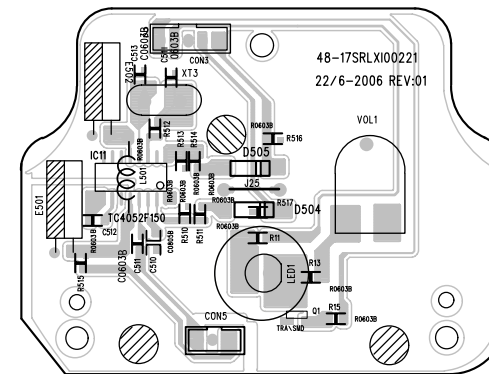
KEY PCB



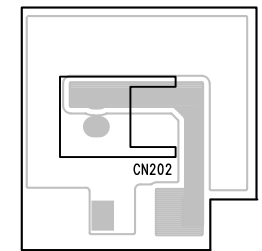
LCD PCB



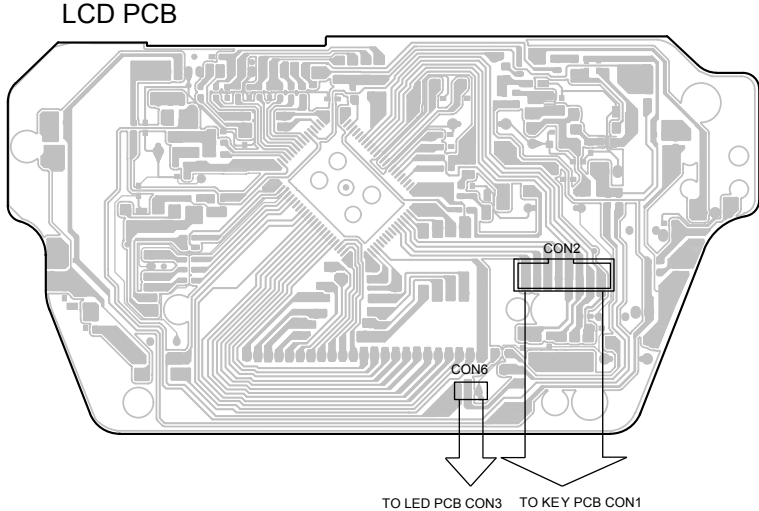
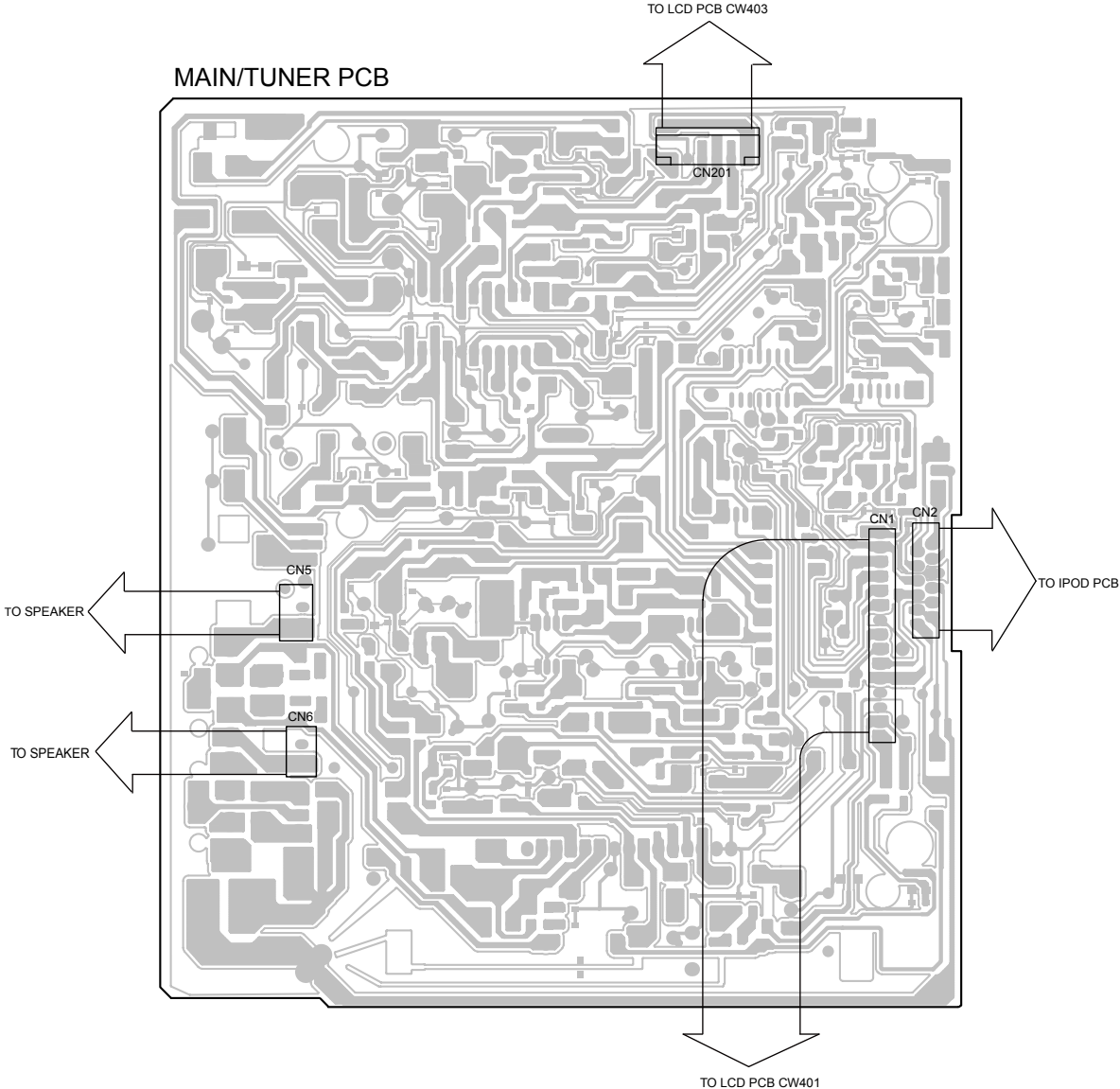
LED PCB



AM ANT PCB



6 WIRING DIAGRAM



SR-LXi/LDS-Di700

7 INCLUDED ACCESSORIES

INCLUDED ACCESSORIES

REF. NO	PARTS NO.	DESCRIPTION	REMARKS
	77-20SRLXI00020	INSTRUCTION BOOK- E/F/SP [T/C]	
	77-20SRLXI00420	INSTRUCTION BOOK- JAP [JIS]	
	02-32A200000000	AM LOOP ANT ASSY- BLACK	
	02-32MC10800000	AM LOOP ANT ASSY -WHITE	
	45-263500000220	STEREO MINI PLUG CABLE - BLACK	
	45-263500000120	STEREO MINI PLUG CABLE - WHITE	
	51-021301000080	LITHIUM BATTERY CR2032	
	45-263500000220	CONNECT CORD 3.5 ST/PLUG X 2 - BLACK	
	45-263500000120	CONNECT CORD 3.5 ST/PLUG X 2 - WHITE	
	02-17SRLXI00070	REMOTE CONTROL - BLACK [E]	
	02-17SRLXI00060	REMOTE CONTROL - WHITE [E]	
	02-17SRLXI00010	REMOTE CONTROL - BLACK [T/C]	
	02-17SRLXI00000	REMOTE CONTROL - WHITE [T/C]	
	02-17SRLXI00030	REMOTE CONTROL - BLACK [JIS]	
	02-17SRLXI00020	REMOTE CONTROL - WHITE [JIS]	
	18-705SRLXI1260	AC ADAPTOR 230V - BLACK [E]	
	18-705SRLXI0260	AC ADAPTOR 230V - WHITE [E]	
	18-703SRLXI0120	AC ADAPTOR 120V - BLACK [T/C]	
	18-703SRLXI1120	AC ADAPTOR 120V - WHITE [T/C]	
	18-701SRLXI0260	AC ADAPTOR 100V - BLACK [JIS]	
	18-701SRLXI1260	AC ADAPTOR 100V - WHITE [JIS]	
		DOCK ADAPTOR x8	
		COVER FOR THE DOCK x 1	

SR-LXi/LDS-Ri700

TEAC

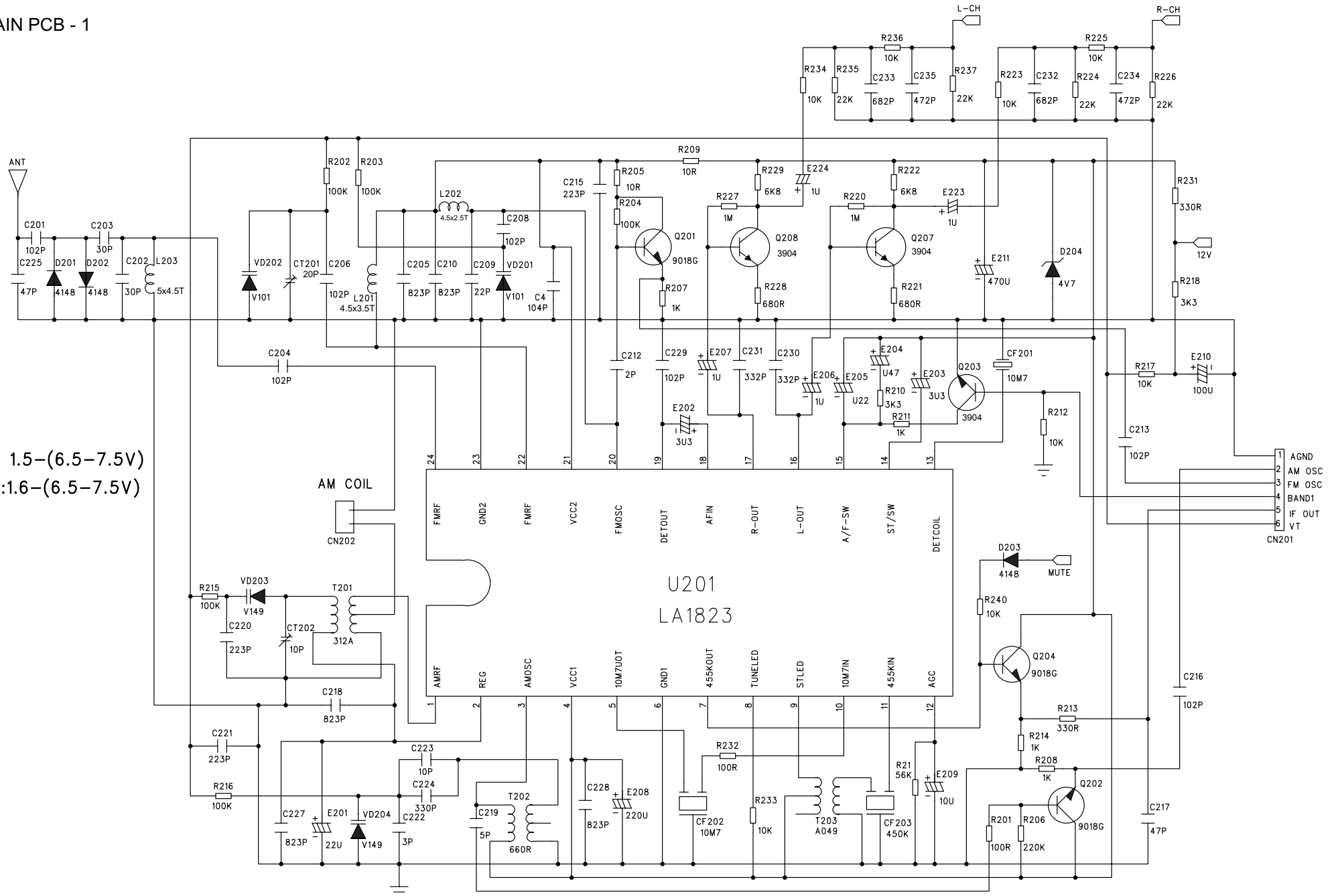
TEAC CORPORATION	3-7-3 Nakacho, Musashino-shi, Tokyo 180-8550, Japan Phone:(0422)52-5081
TEAC AMERICA, INC.	7733 Telegraph Road, Montebello, California 90640 Phone: (323)726-0303
TEAC CANADA LTD.	5939 Wallace Street, Mississauga, Ontario L4Z 1Z8, Canada Phone: (905)-890-8008
TEAC MEXICO, S.A.De C.V.	Campesinos N°184, Colonia.Granjas Esmeralda, Delegacion Iztapalapa, CP 09810, Mexico DF Phone: (525)-581-5500
TEAC UK LIMITED	Unit 19 & 20, The Courtyards, Hatters Lane, Watford, Hertfordshire, WD18 8TE5, U.K. Phone:(0845) 130-2511
TEAC EUROPE GmbH	Bahnstrasse 12, 65205 Wiesbaden-Erbenheim, Germany Phone: 0611-71580
TEAC ITALIANA S.p.A.	Via C, Cantu 9/A, 20092 Cinisello Balsamo, Milano, Italy Phone:02-66010550
TEAC AUSTRALIA PTY., LTD.	280 William Street, Melbourne VIC 3000, Australia Phone:(03)9672-2400
A.B.N. 80 005 408 462	

NOV 2006

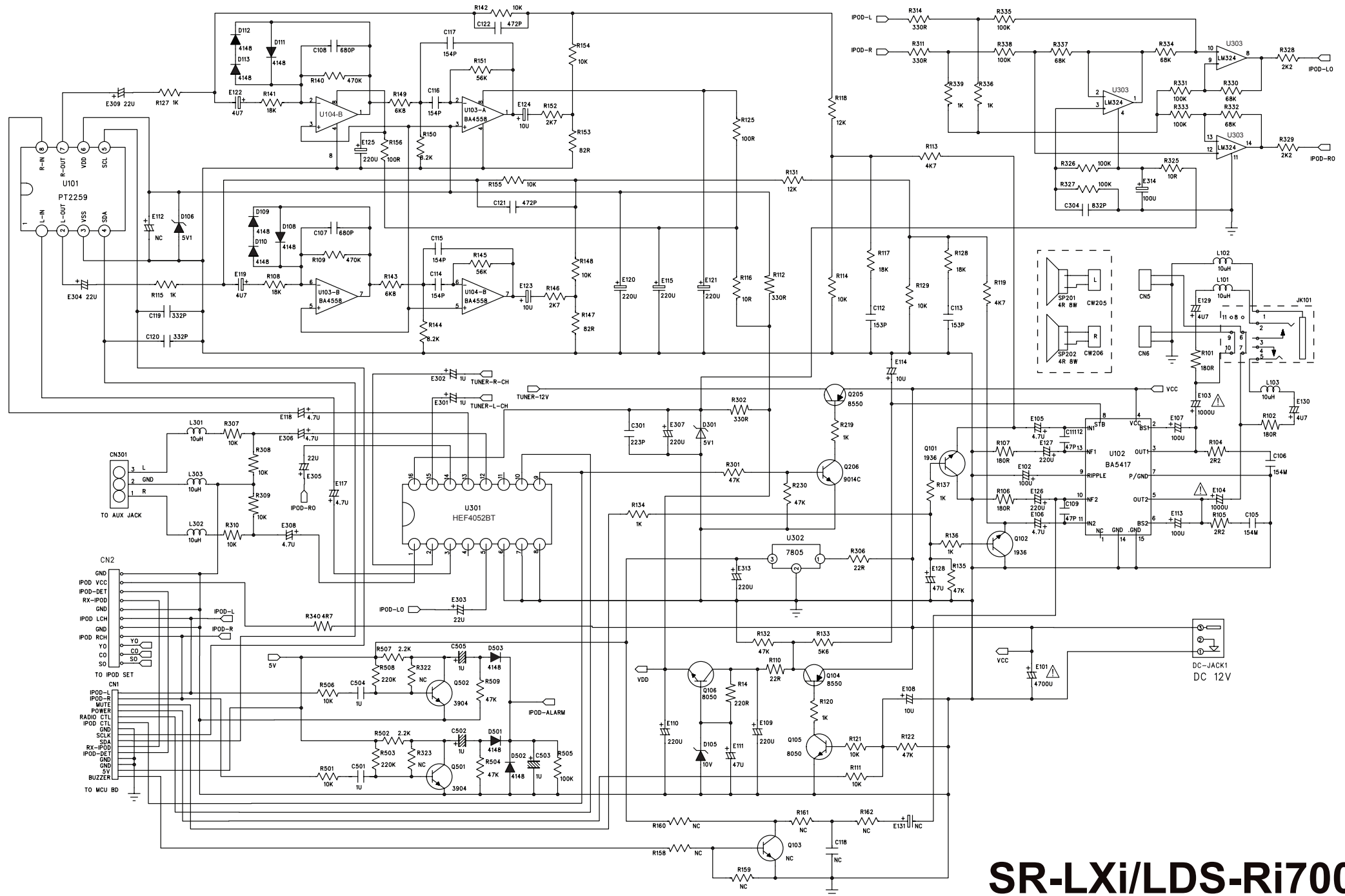
PREPARED IN HONG KONG

MAIN PCB - 1

VT:AM 1.5-(6.5-7.5V)
FM:1.6-(6.5-7.5V)



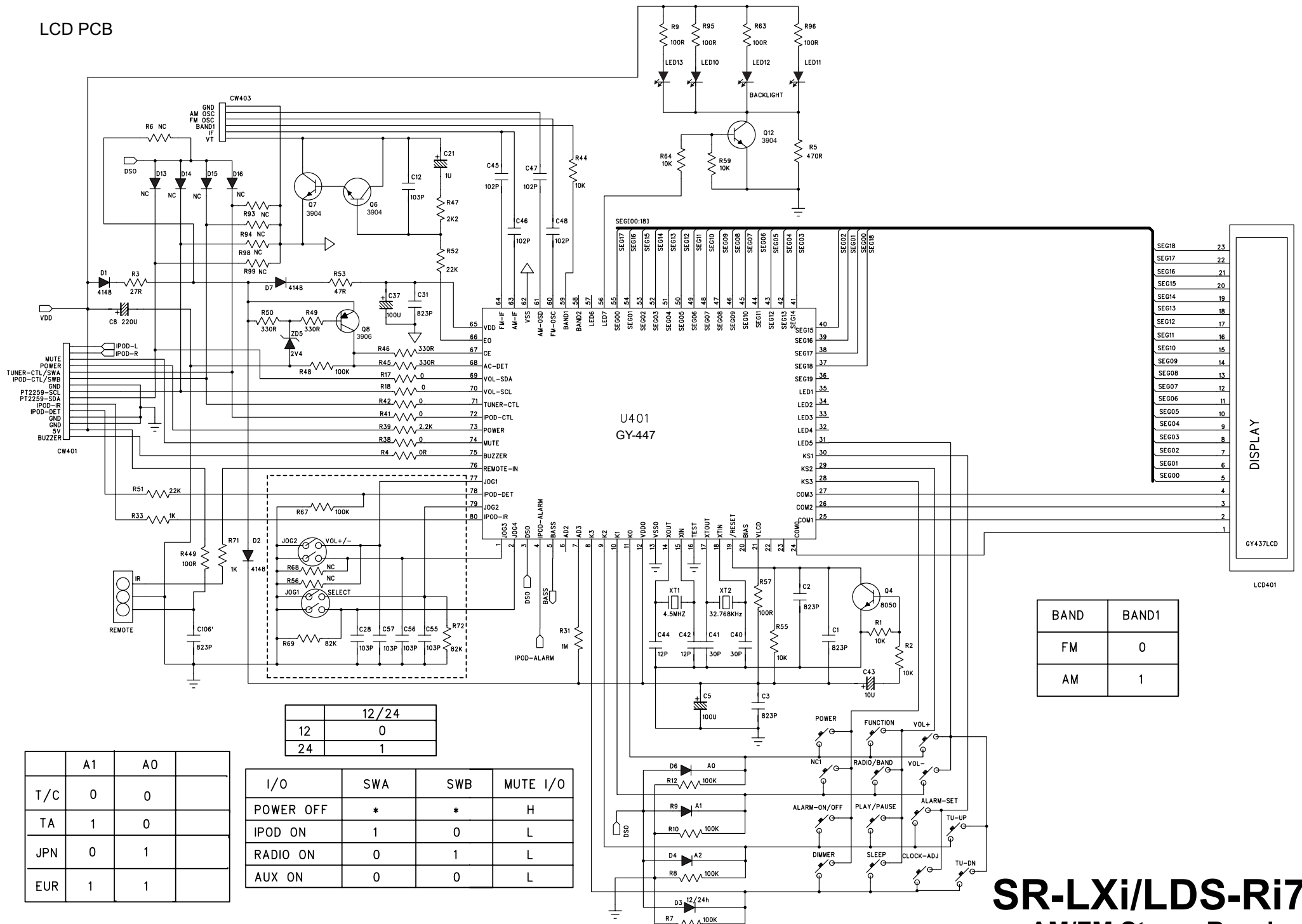
SR-LXi/LDS-Ri700
AM/FM Stereo Receiver



SR-LXi/LDS-Ri700

AM/FM Stereo Receiver

LCD PCB



BAND	BAND1
FM	0
AM	1

	12/24
12	0
24	1

	A1	A0	
T/C	0	0	
TA	1	0	
JPN	0	1	
EUR	1	1	

I/O	SWA	SWB	MUTE I/O
POWER OFF	*	*	H
IPOD ON	1	0	L
RADIO ON	0	1	L
AUX ON	0	0	L

SR-LXi/LDS-Ri700 AM/FM Stereo Receiver